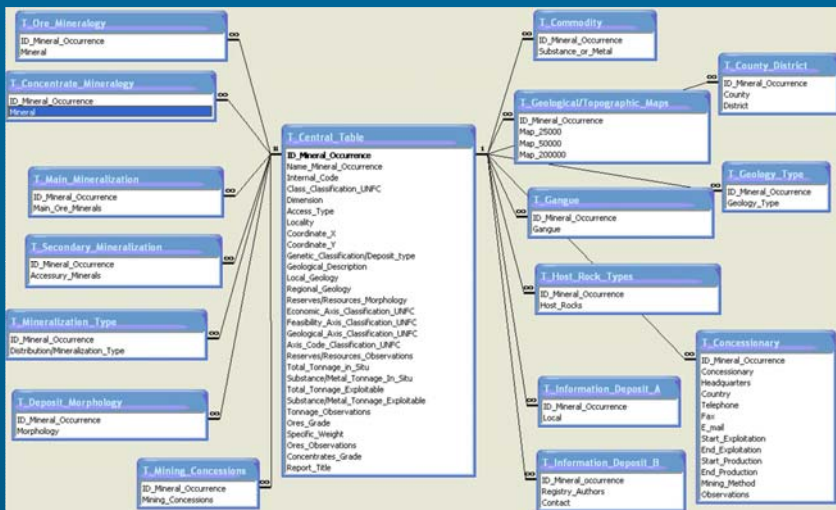




# MINERAL RESOURCES DATA MANAGEMENT IN PORTUGAL



PORTUGAL



SIORMINP Structure – Relational database

Portuguese entities responsible for mineral resources data management:

- Oil and Gas on and off-shore – DGE
- Other Mineral Resources – LNEG

### Current situation:

- LNEG has implemented a Mineral Resources database – SIORMINP
- Some of the attributes are publicly available on the LNEG's portal, all attributes from a mineral deposit may be accessed by request;
- Some queries possible in the LNEG's portal but only in Portuguese language;
- The GIS interface of SIORMINP is accessible on request.

### Current and future developments:

- LNEG will make available mineral resources data from the main mineral resources in the portals of two European projects in which LNEG is a partner – **ProMine** and **EuroGeoSource**, each with specific and different purposes. In the portal of the latter project, DGE will also make available oil and gas on and off-shore data;
- LNEG is restructuring its internal mineral resources database which is supported on an area/block logic, with a public GIS interface and a metadata catalogue INSPIRE compliant, in both Portuguese and English.

Prepared by LNEG/URMG. Get more information by contacting: [helena.santana@lneg.pt](mailto:helena.santana@lneg.pt) / [augusto.filipe@lneg.pt](mailto:augusto.filipe@lneg.pt)



## Nano-particle products from new mineral resources in Europe



<http://promine.gtk.fi>

Project Coordination: GTK (Finland)

ProMine work packages in the Minerals Cycle

- A 21st century VISION of new ways of mining & product development across 4 mineral belts in Europe;
- **Developing cutting edge technological solutions that are targeted to make European mining:**
  - **competitive**
  - **sustainable**
  - **responsible**
  - **acceptable**



ProMine Partners



EuroGeoSource: [www.eurogeosource.eu](http://www.eurogeosource.eu)



## EU Information and Policy Support System for Sustainable Supply of Europe with Energy and Mineral Resources

On going important actions

1st international workshop:  
User needs on energy and minerals data and services

Budapest-Hungary  
10th March 2011

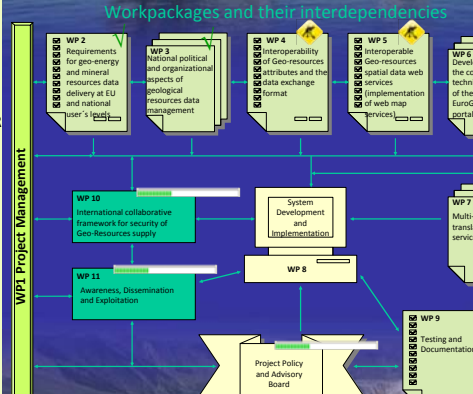
General information

- CIP-ICT- Policy Support Programme,
- Geographic information theme
- budget of 2.5 million EUR
- 3 years project
- started April 1, 2010
- Coordination:

Consortium



11 EU Geological Surveys  
1 University  
2 commercial companies



Examples of functionalities directed to mining companies:

- easy identification of national geo-resources data management entities and mining authorities;
- awareness of public tender exploration areas;
- tools capable to visualize infrastructures, protected sites and other data available on the INSPIRE portal.