

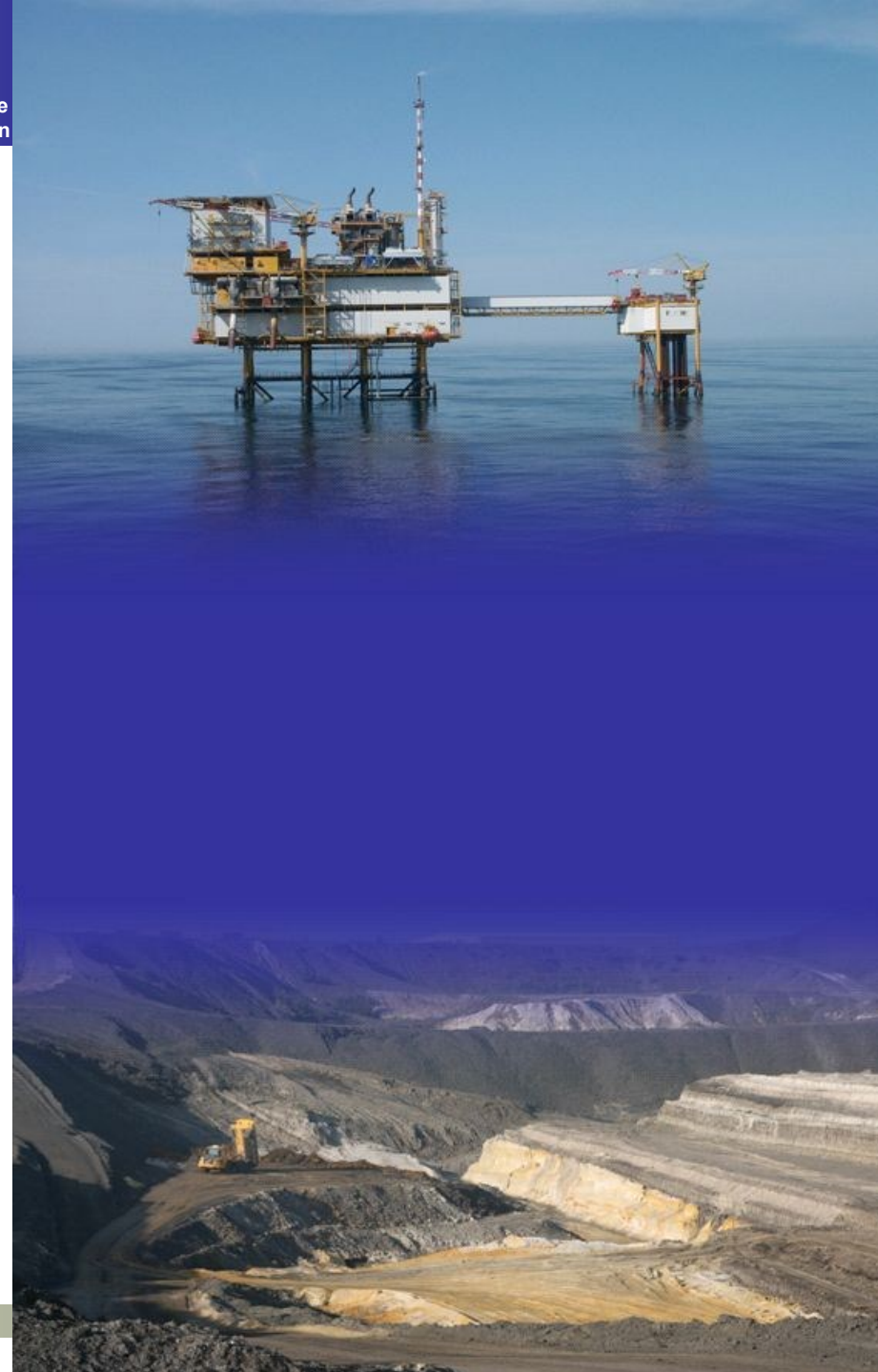
# Status of the EuroGeoSource System

**(Server side)**

**Rubén Béjar**



**Universidad  
Zaragoza**



# Agenda

- Introduction
- Since the previous workshop...
- Architecture
- Database, cache, performance
- Caching architecture
- Catalog
- Other services
- Conclusions and pending work



# Introduction

- Current snapshot of the server side of the EuroGeoSource (EGS) System

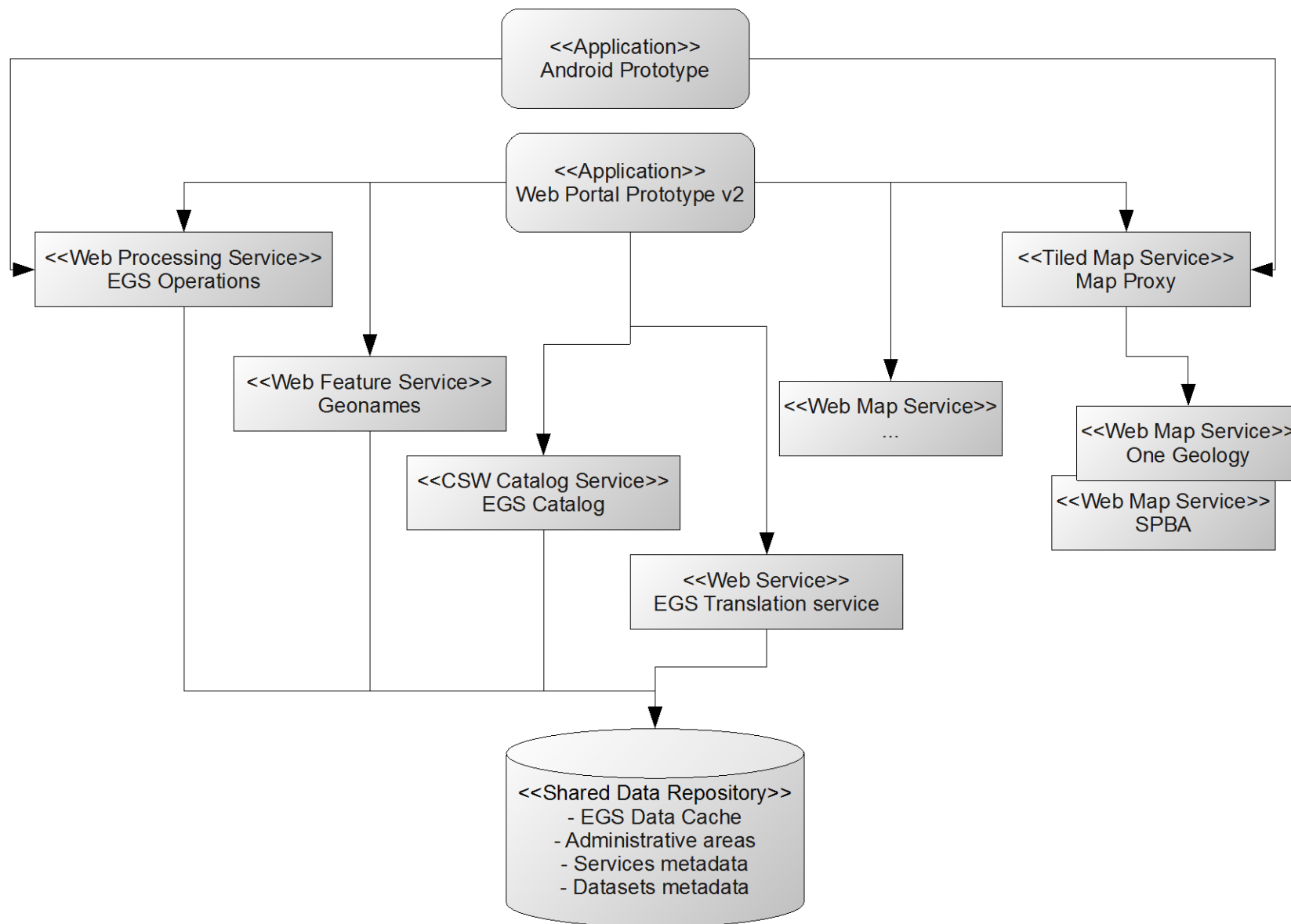


# Since the previous workshop...

- Data from the partners
  - Via download services (WFS), following the EGS data model
- New view services (WMS)
  - Southern Permian Basin Atlas (94 WMS)
- Performance improvements
- Catalog for services and datasets
- Geographic names service
- Translation service



# Architecture



# Database, cache, performance

- Database

- EGS data cache
- Administrative areas



- Metadata Harvesting



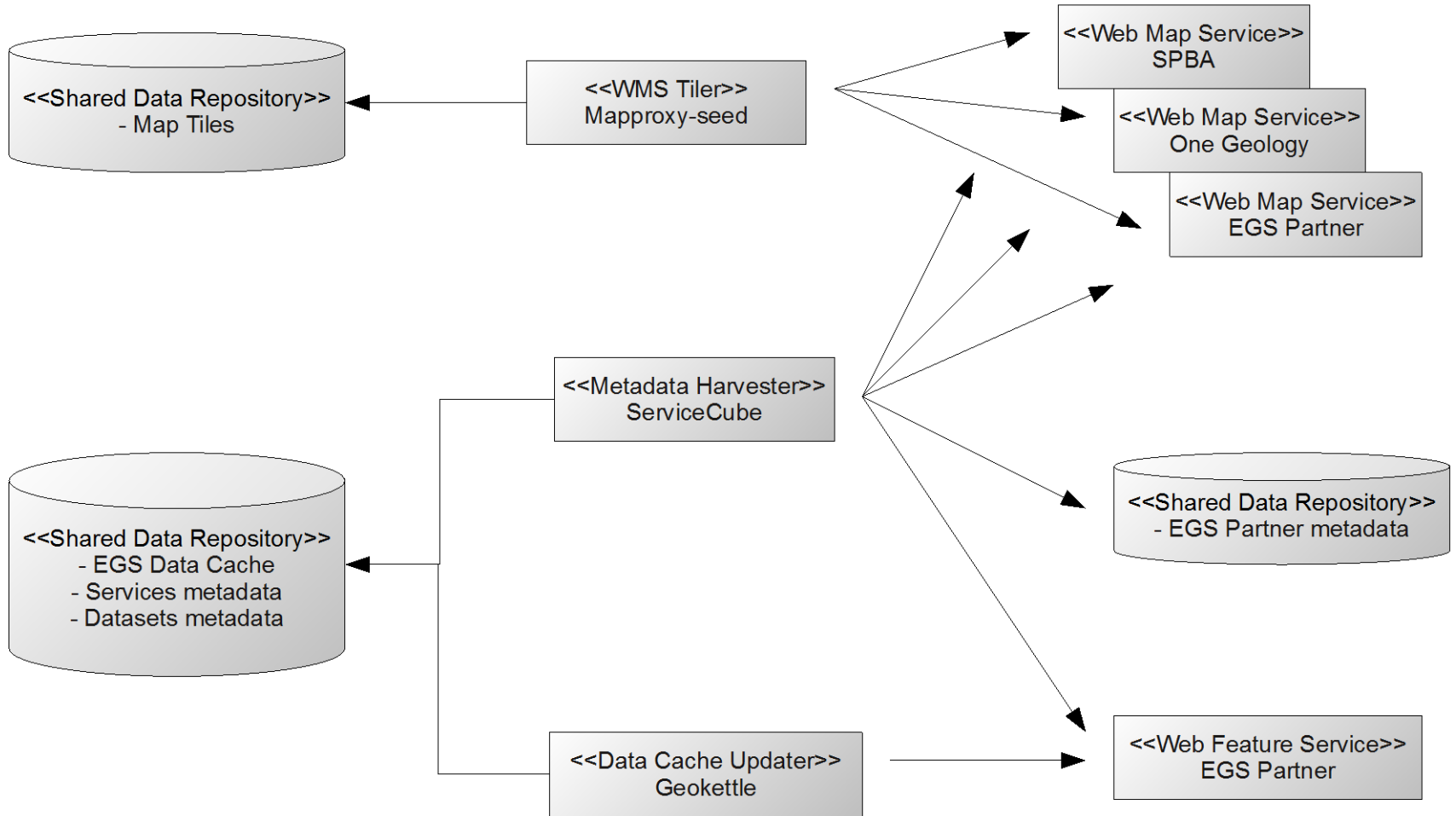
**SpatiumCube**

- For datasets (in development)
- OGC service capabilities extractor

- Tiled WMS



# Caching Architecture



# Catalog

- OGC Catalog Services for the Web (CSW 2.0.2)
  - For datasets and services
  - Dublin Core and ISO profiles
- EGS OGC Services capabilities and datasets metadata will be linked



**SpatiumCube**





# Other services

- Processing service deegree
  - OGC Web Processing Service 1.0
  - Provide functionality to the client applications (Web client and Android client)
  - Use case driven
- Geonames service deegree
  - OGC Web Feature Service 1.0 / 1.1.0
  - Administrative areas



# Conclusions and pending work

- The EGS system advances as planned
- Main pending tasks (server side)
  - Supporting more use cases
  - Completing contents: data, metadata, internationalization...
  - Policies of the data updating processes
  - Testing
  - Installing in a stable environment (hosting/cloud...)



# Rubén Béjar

[rbejar@unizar.es](mailto:rbejar@unizar.es)

[@Ruben\\_Bejar](https://twitter.com/Ruben_Bejar)

